



We're There.



PRODUCT OVERVIEW

Why Winters

1. Large and deep product offering

Allows access to many new and different customers

2. High quality products

Worry-free installations with an extremely low defect rate of **0.17%**

3. Five year warranty

Covering all instrumentation

4. Servicing all market segments

Covering both the industrial and commercial markets

5. High field support presence

A large number of Regional Sales Managers providing global coverage

6. Distributed globally

Global distribution in over 90 countries through 8 Winters sales and service offices

7. Distributor training events

Ensuring our partners are fully equipped to promote, sell and support our instrumentation products

8. Engineering team

Responding to technical RFQs and providing application know-how

9. Regular 3rd party factory audits

Customers and agencies verifying standards and certifications

10. Approvals

Adhering to higher standards: 3A RoHS, CE, CRN, CSA, FM, ISO 9001, UL

11. Distributor portal

All of our Winters tools at your convenience

12. Global AMLs

Easier acceptance into industrial and commercial projects

13. StabilizR®

Gauge dampening technology without glycerin filling

14. Strong R&D

Numerous new product launches

15. Platinum service

Front of the line service

16. UPC labelled product and packaging

Fast and simple product identification

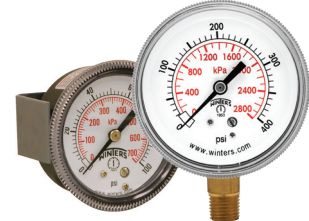
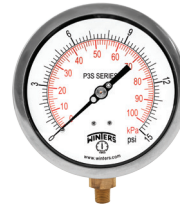
17. Comprehensive website and App

Embracing mobile technology

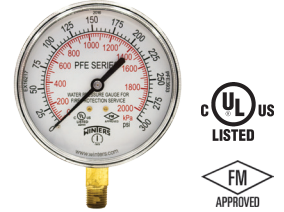
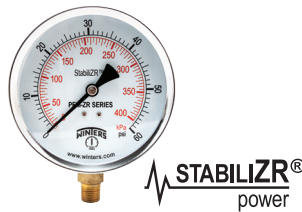
18. Canada's Best Managed Companies Program Winner Since 2017

Recognition for innovation and sustained performance re-enforces Winters' commitment to continuous improvement

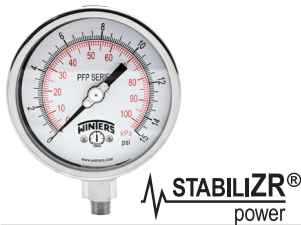
Pressure Gauges



	DPG Digital	P1S 100 Series*	P3S 300 Series	P9S/P9U 90 Series
Dial Size	2.5" (63mm)	3.5" (90mm) 4" (100mm) 4.5" (115mm) 6" (150mm)	4.5" (115mm) 6" (150mm) 8.5" (215mm) 10" (250mm)	1.5" (40mm) 2" (50mm) 2.5" (63mm) 3.5" (90mm)
Tube and Socket	316 SS	Phosphor bronze/brass	316L SS/brass*	Phosphor bronze/brass
Connection	¼" NPT	¼" NPT	¼" NPT for 600 psi or lower ½" NPT for 1,000 psi or higher	¼" NPT ⅛" NPT
Range	Vac-0-15,000 psi	Vac-0-5,000 psi/kPa	Vac-0-20,000 psi/kPa	Vac-0-600 psi/kPa



	PAG/PSQ 3A Sanitary	PEM-ZR Economy StabilizR®*	PFD Differential*	PFE Sprinkler*
Dial Size	2.5" (63mm) 4" (100mm)	1.5" (40mm) 2" (50mm) 2.5" (63mm) 4" (100mm)	4" (100mm)	3.5" (90mm)
Tube and Socket	316L SS	Phosphor bronze/brass	Die-cast aluminum, silicon rubber	Phosphor bronze/brass
Connection	316 SS, electro-polished with 0.75", 1.5" or 2" Tri-Clamp®	1.5" dial: ⅛" NPT 2" dial: ⅛", ¼" NPT 2.5", 4" dial: ¼" NPT	1/8" NPTF high & low, side & back	¼" NPT
Range	Vac-0-1,000 psi/bar	Vac-0-5,000 psi/kPa	-0.25-0-150"H ₂ O, mmH ₂ O, psi, PA	0-300 psi/kPa or 0/80/retard-250 psi/kPa

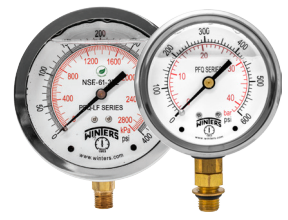


	PFP/PFP-ZR Premium Filled	PPD/PRD/PSD/PVD Differential	PSC Safety Case	PSP Spiral Tube
Dial Size	2.5" (63mm) 4" (100mm) 4.5" (115mm) 6" (150mm)	2.5" (63mm) 3.5" (90mm) 4.5" (115mm)	4" (100mm) 4.5" (115mm) 6" (150mm)	1" (25mm) 1.125" (30mm) 1.25" (32mm) 1.5" (40mm)
Tube and Socket	316L SS/brass*	SS and others	316L SS	304 SS/beryllium copper/brass*
Connection	2.5" dial: ¼" NPT 4" dial: ¼", ½" NPT, ½" BSP(G), 9/16" HP/HP autoclave 6" dial: ¼", ½" NPT	¼" or ½" NPT and others	¼" or ½" NPT	⅛" NPT
Range	Vac-0-40,000 psi/kPa	"H ₂ O-110 psid	Vac-0-20,000 psi/kPa	0-5,000 psi

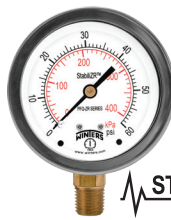
Pressure Gauges



	PTG Test*	PAM Ammonia	PBC Forged Brass Case*	PCT/PCT-LF Contractor*
Dial Size	4" (100mm) 6" (150mm) Mirror band for precise reading	2.5" (63mm), 3.5" (90mm), 4" (100mm), 6" (150mm), 8.5" (215mm), 10" (250mm)	2.5" (63mm) 4" (100mm)	4.5" (115mm)
Tube and Socket	Brass	316L SS	Brass	Phosphor bronze/brass or lead free phosphor bronze/brass
Connection	¼" or ½" NPT	¼" NPT	2.5" dial: ¼" NPT 4" dial: ¼", ½" NPT	¼" NPT
Range	Vac-0-10,000 psi/kPa	Vac-0-300 psi/°F	Vac-0-10,000 psi/kPa	Vac-0-5,000 psi/kPa



	PDT Differential	PDX Duplex	PEM/PEM-LF/PEU Economy*	PFQ/PFQ-LF Filled
Dial Size	4.5" (115mm) 6" (150mm)	4.5" (115mm) 6" (150mm)	1.5" (40mm) 2" (50mm) 2.5" (63mm) 4" (100mm)	1.5" (40mm) 2" (50mm) 2.5" (63mm) 4" (100mm)
Tube and Socket	316L SS/phosphor bronze/brass*	316L SS/phosphor bronze/brass*	Phosphor bronze/brass or lead free phosphor bronze/brass	316 SS/phosphor bronze* or 316 SS/lead free phosphor bronze*
Connection	¼" NPT	¼" NPT	1.5" dial: ⅛" NPT 2" dial: ⅛", ¼" NPT 2.5", 4" dial: ¼" NPT	1.5" dial: ⅛" NPT 2" dial: ⅛", ¼" NPT 2.5" dial: ¼" NPT, 7/16"-20 SAE 4" dial: ¼", ½" NPT
Range	0-600 psi	0-600 psi	Vac-0-5,000 psi/kPa	Vac-0-15,000 psi/kPa - PFQ Vac-0-15,000 psi/bar - SAE



STABILIZR®
power



STABILIZR®
power



STABILIZR®
power

	PFQ-ZR StabilizR®*	PLP Low Pressure	PN2/PN2-ZR NACE - MR0175-2002	PPC/PPC-ZR Process
Dial Size	2.5" (63mm) 4" (100mm)	2.5" (63mm) 4" (100mm) 4.5" (115mm) 6" (150mm)	4" (100mm) 6" (150mm)	4.5" (115mm)
Tube and Socket	Phosphor bronze/brass	316 SS/brass*	316L SS	316L SS/phosphor bronze/brass*
Connection	¼" or ½" NPT	¼" NPT	¼" or ½" NPT	¼" or ½" NPT
Range	Vac-0-15,000 psi/kPa	Vac-0-10 psi/kPa	Vac-0-20,000 psi/kPa	Vac-0-20,000 psi/kPa

Pressure Switches



WPS Commercial

Features: Low pressure differential switch with SPDT

Range: 0.08 to 16.0 "H₂O

Applications: Monitoring air filters, ventilation ducts and heat exchange

2WPS General Purpose

Features: Aluminum housing and wetted parts. CSA and CRN approved

Range: Vac to 500 psi

Applications: Suitable for all general purpose areas

4WPS Low Pressure

Features: Diaphragm type switch. CRN

Range: Vac to 150 psi

Applications: Low pressure gas and liquid monitoring

5WPS Differential

Features: Bellows actuated switch. Single and Dual available

Range: 15 psi to 5,000 psi

Applications: High-level control, including filtration and pumping stations

9WPS Explosion Proof

Features: All stainless steel design. CSA, CRN and dual-seal approved

Range: Vac to 10,000 psi

Applications: Hazardous locations; safety panels, gas compressor, turbines and pump skids

Pressure Transmitters



LE1 OEM

Features: Compact SS with ceramic sensor. Developed for OEM applications. CE approved

Range: Vac to 8,700 psi

Applications: Pump and compressor monitoring, refrigeration and HVAC

LE3 General Purpose

Features: Can be utilized in many applications. CSA, ±0.5% accuracy

Range: Vac to 5,000 psi

Applications: Industrial machinery, hydraulics & pneumatics, compressor controls, boilers, chillers, AC & refrigeration

LIS Intrinsically Safe

Features: Intrinsically safe design for hazardous areas. CSA, ±0.5% accuracy

Range: Vac to 8,700 psi

Applications: Appropriate for all hazardous areas where an intrinsically safe rating is required

LM1 Submersible

Features: Heavy duty design. NEMA 6P full immersion and ±0.25% accuracy

Range: 0/2 psi to 0/50 psi

Applications: Lift station level measurement, waste water and reservoir monitoring

LXP Explosion Proof

Features: Designed with explosion proof enclosure. cULus, CRN and single-seal approved. ±0.25% accuracy

Range: Vac to 10,000 psi

Applications: Hazardous locations in oil and gas installations including pump and compressor controls

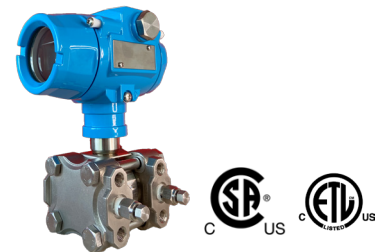


WinSMART™ LY16 Pressure Transmitter

Features: Explosion proof smart pressure transmitter for hazardous environments. Providing both analogue and digital communication outputs including a highly functioning LCD display. With a built-in temperature sensor, LY16 provides 0.2% or 0.5% accuracy

Range: Vac-14,500 psi

Applications: Pressure monitoring for oil and gas, well head process control, petrochemical installations, power generation equipment and all hazardous locations



WinSMART™ LY36 Differential Transmitter

Features: Explosion proof smart differential pressure transmitter for hazardous environments. Providing both analogue and digital communication outputs including a highly functioning LCD display with re-zero function. With a built-in temperature sensor, LY36 provides 0.075% or 0.05% accuracy

Range: Vac-1,450 psi

Applications: Differential pressure monitoring for oil and gas installations, well head process control, petrochemical installations, power generation equipment and all hazardous locations

Thermometers

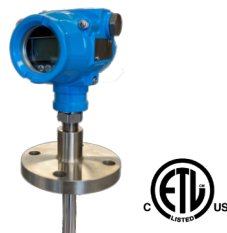


	TAG HVAC Gold Case*	TAS/TAS-LF Industrial 5**	TBM/THS Bi-Metal	TCT/TMT Surface
Dial/Scale	4.5" (115mm) 6" (150mm)	5" (125mm)	TBM: 1" (25mm), 2" (50mm) 3" (75mm), 4" (100mm) 5" (125mm), 6" (150mm) THS: 3" (75mm)	2.5" (63mm)
Sensing Element	Brass	Brass or lead free brass	SS	Bi-metallic coil
Bulb/Stem Length	2" (50mm)	1.825" (46mm)	TBM: 2.5" (63mm) - 48" (1,219mm) THS: 2.5" (63mm) - 24" (600mm)	-
Accuracy	±2% full scale	±2% full scale	±1% full scale	TCT: ±3% full scale TMT: ±2% full scale



	TIM/TIM-LF/TSD 9**	TRR Remote Reading	TSW/TSW-LF Hot Water*	TTD Tridicator*
Dial/Scale	TIM/TIM-LF: 9" (230mm) TSD: LCD size: 2.25" (57mm) x 2.25" (57mm)	2.5" (63mm), 3.5" (90mm) 4" (100mm), 4.5" (115mm) 6" (150mm), 8.5" (215mm)	Dial: 2" (50mm) or 2.5" (63mm) Scale: 8" (200mm)	2.5" (63mm) 3" (75mm)
Sensing Element	TIM/TIM-LF: Brass or lead free brass TSD: Brass	SS/brass*	Brass or lead free brass	Brass
Bulb/Stem Length	3.5" (90mm), 6" (150mm)	6" (150mm)	Dial: 1.5" (40mm) Scale: 2.5" (63mm)	2.5" (63mm): 2.15" (55mm) stem 3" (75mm): 2.75" (70mm) stem
Accuracy	±1% of reading	Gas actuated: ±1% full scale Vapour actuated: ±2% full scale	±1% full scale	Pressure: ±3-2-3% Temperature: ±3% full scale

RTD and Thermocouples



WinSMART™ TY52 Transmitter

Features: Explosion proof smart RTD temperature transmitter for hazardous environments. Providing both analogue and digital communication outputs (HART & Modbus) including a highly functioning LCD display. TY52 accuracy is 0.5%

Range: -50/400°C (-58/752°F)

Applications: Utilized and installed anywhere where temperature measurement is required. This product has a rugged design and is equipped with the communication protocols to meet all your day-to-day requirements



TER Industrial RTD Sensor

Features: Highly accurate RTD with PT100 sensor and 4/20mA transmitter. ±0.15°C at 0°C accuracy with standard stainless steel stem material.

Range: -328°F to 1,022°F (-20°C to 550°C)

Applications: Single sensing installations include processing plants, paper mills, storage tanks and petrochemical facilities.





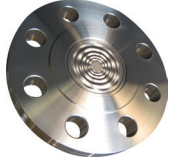


TET Thermocouples Sensor

Features: Functional J & K type thermocouple sensors providing a wide range of temperature options, Accuracy of ±0.4°C Class 1

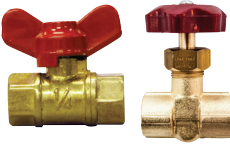

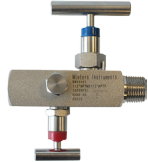

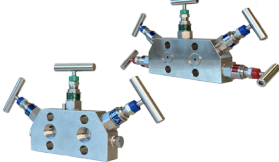
Range: J-type -328°F to 1,382°F (-200°C to 750°C), K-type -328°F to 2,192°F (-200°C to 1,200°C)

Applications: Single sensing installations include processing plants, and petrochemical facilities. Multi-point installations include refineries, reactors and gas-to-liquid process







Diaphragm Seals

				
D10 PVC	D40 OEM	D44 Flanged	D70 Industrial 2-piece	D81 Isolation ring
Features: Durable and flexible PTFE seal with PVC housing	Features: Compact one-piece design. CRN	Features: All welded flanged construction. Continuous use rated seal	Features: Heavy duty, all stainless steel construction. Continuous use rated seal. CRN	Features: Allows for flow-through of highly viscous material, non-clogging
Range: Vac to 200 psi	Range: 30 psi to 1,000 psi	Range: 30 psi to 2,500 psi	Range: 30 psi to 2,500 psi	Range: Vac to 1,000 psi
Applications: To be installed in applications where the media would corrode metal instruments	Applications: Suited for compact OEM installations	Applications: Engineered environments such as upstream oil and gas and petrochemical plants	Applications: D70 is utilized with highly viscous and corrosive media	Applications: Pressure easurement in waste water, P&P and mining


Valves and Manifolds

				
SMV-LF & SNV-LF Mini Valve*	NVA Valve	BBV 2-Handle	BBV 3-Handle	MVA 3 & 5-Handle Manifold
Features: An economical isolation valve for pressure gauges and transmitters. Brass or lead free brass wetted parts, CRN	Features: SS, CS and NACE configurations in straight and angle body. CRN	Features: SS, CS and NACE variants with 1/4" bleed and 2-handle control. CRN	Features: SS and NACE variants with 1/4" bleed and 3-handle redundant control. CRN	Features: Designed for use with differential pressure transmitters and impulse lines. With isolation, venting equalizing.
Range: Up to 400 psi	Range: 6,000 and 10,000 psi	Range: 6,000 and 10,000 psi	Range: 6,000 and 10,000 psi	Range: Up to 6,000 psi
Applications: Provides flow control for non-corrosive applications including water lines	Applications: Severe duty which require valve isolation	Applications: Heavy duty installations ideally bundled with transmitters and switches	Applications: Severe duty installations with redundant 3rd handle for safety	Applications: Critical in process and industrial enviroments for enabling repair, shut downs and updating of instrumentation

Accessories

					
SCT Cooling Tower	SOP Protector	SSN/SSN-LF SAS Snubbers*	SSP Syphon	STP/STP-LF Test Plug*	Thermowells
Features: Perforated cover and spiral tube quickly dissipates media temperature. CRN	Features: Easy field adjustable setpoint. All stainless steel. CRN	Features: SS, brass and lead-free brass. CRN	Features: CS, brass* and SS materials. CRN	Features: Facilitates quick pressure readings. Brass and lead free brass. CRN	Features: Threaded, flanged and socket weld types in a variety of materials and sizes. CRN
Range: Up to 1,500 psi	Range: Up to 10,000 psi	Range: Up to 20,000 psi	Range: Up to 1,650 psi	Range: Up to 1,000 psi	Range: Up to 7,000 psi
Applications: Utilized for extremely high temperature media	Applications: For the protection of pressure instruments against line surges	Applications: For pressure pulsations	Applications: For steam service installations eg. boiler	Applications: Mainly used in plumbing, HVAC and refrigeration	Applications: Isolates the temperature sensor from the media and also closes the system

More accessories are available. Please contact us for a full list of products. Products with an "LF" suffix are available with lead free wetted parts.

*  **WARNING:** This product can expose you to chemicals including lead, which is known to the State of California to cause cancer and birth defects or other reproductive harm. For more information go to www.P65Warnings.ca.gov.



WINTERS INSTRUMENTS

MANUFACTURER OF INDUSTRIAL INSTRUMENTATION



Winters Instruments is a global manufacturer of premium quality pressure and temperature instrumentation, with distribution partners in over 90 countries. Please contact us for your nearest Regional Manager.

Corporate - Canada

Winters Instruments
121 Railside Road
Toronto, Ontario
M3A 1B2
Tel: 416-444-2345
1-800-WINTERS
Fax: 416-444-8979
sales@winters.com

Canada - Calgary

Winters Instruments
3125-16 Street NE
Calgary, Alberta
T2E 7K8
Tel: 403-723-6645
1-800-WINTERS
Fax: 403-723-6647
calgary@winters.com

USA - Houston

Winters Instruments
5400 W. Sam Houston Pkwy N.
Houston, Texas
77041
Tel: 281-880-8607
1-800-WINTERS
Fax: 281-880-8614
usasales@winters.com

USA - Buffalo

Winters Instruments
Airport Commerce Park
455 Cayuga Rd., Suite 650
Buffalo, New York
14225
Tel: 716-874-8700
1-800-WINTERS
Fax: 716-874-8800
usasales@winters.com

Asia - Shanghai

Winters Instruments
Shanghai WitHub Hi-Tech
Business Center Suite 308
No. 333 Hongqiao Road
Shanghai 200030 China
Tel: 86-21-6104-2610
Fax: 86-21-6104-2615
asiasales@winters.com
www.wintersasia.com

Latin America

Winters Instruments
Lamadrid 121
Los Troncos del Talar, B1608CEC
Buenos Aires, Argentina
Tel: 54-11-4715-3036
latinsales@winters.com
www.winters.com.ar

United Kingdom - Northampton

Winters Instruments
Unit, 4B Kingsfield Cl,
Northampton,
NN5 7QS
Tel: 44-0-1604-434826
emeasales@winters.com
www.winters.com

Europe - Middle East - Africa

Winters Instruments
Dubai Airport Free Zone
6WB G50
Dubai, United Arab Emirates
Tel: 971-4295-9177
Fax: 971-4295-9177
emeasales@winters.com



Distributed by: